



# TERM 2 CLEARANCE

*Priced to clear - while stocks last!*

## SNAP CIRCUITS - LIGHT

Watch and be amazed at what your music can do with the Snap Circuits LIGHT! Connect your iPod or any MP3 player and enjoy your music as the lights change to the beat.

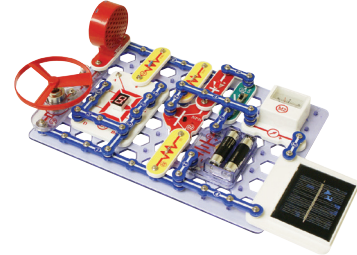
- Build over 175 exciting projects.
- All parts are mounted on plastic modules and snap together with ease.
- Contains over 55 parts to build more than 175 projects.
- No Tools required.



SCL175  
\$90

## SNAP CIRCUITS - EDUCATIONAL 750 EXPERIMENTS

Gives an in-depth exploration of the electronic components.



SC750  
\$180

## SNAP CIRCUITS - DELUXE SOUND & LIGHT COMBO IN CASE

Build over 350 exciting projects! Features include: Sound energy demonstration; echo effects; infrared detector, strobe light, Strobe integrated circuits (IC) and much more!

- Keyboard with optical theremin
- Contains over 65 parts, and colour changing LED!
- Suitable for ages 8+
- Requires 4 x AA batteries (not included).



SCC350  
\$180

## SNAP CIRCUITS - MOTION

Snap Circuits Motion contains over 50 parts and over 165 projects to complete. All motion and physics focused. Experiment with gear ratios using various gears and pulleys.

- Experiments include: Colour changing lighted fan, Air "fountain", Motion detector, and lots more
- The project manual includes large colour illustrations and simple directions for each project
- Suitable for ages 8+
- Requires 4 x AA batteries (not included).

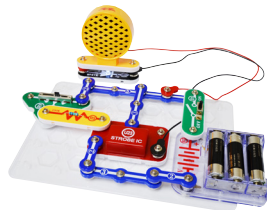


SCM165  
\$95

## SNAP CIRCUITS - STROBE LIGHT & SOUND

Adjustable-speed strobe light with sound effects. 14 additional projects.

- Suitable for ages 8+.
- Requires 3 x AA batteries (not included).



SCP14  
\$25

## SNAP CIRCUIT GUIDES

Complete Student Guide for Models SC300, SC500 & SC750

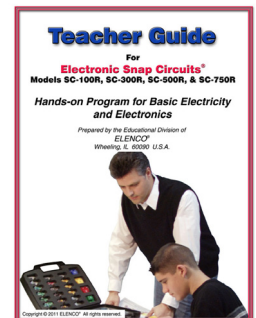
CODE: SCG753307  
\$7.50

Snap Circuits Student Guide for SC100

CODE: SC753294A  
\$7.50

SNAP CIRCUITS - THE COMPLETE TEACHER'S GUIDE

CODE: SCG753290  
\$10.95



## SNAP CIRCUITS DELUXE CASE

Heavy duty plastic case with 2 custom printed foam inserts for housing Snap Circuit components and parts. Makes identifying missing parts much easier. Also a separate small case to hold the smaller loose parts.



SNAPCASE7  
\$50

Prices include GST.

## May Specials

PRICES VALID UNTIL 31ST MAY, 2024, OR WHILE STOCKS LAST

5% off prices of this range of bench meters..

### QUALITY BENCHMETERS



ANALOGUE BENCH METERS			WAS	NOW
PA-6	Ammeter	0-1A/0-5A in 20mA/100mA DC	\$23.65	\$22.47
PA-10	Ammeter	Range 0-10A in 200mA	\$23.65	\$22.47
PA-111	Voltmeter	Range 0-3V/15V/30V DC in 0.1V/1V/1V	\$23.65	\$22.47
PA-14-1	Galvanometer	500 -0-500uA in $\pm 20\mu\text{A}$	\$23.65	\$22.47
PA 221	Student Dual	Voltmeter / Ammeter	\$45.00	\$42.75

### DIGITAL BENCHMETERS

#### USE ALSO AS A GALVANOMETER (+) (-)

- Extra strong, plastic case, (14cms x 10cms)
- 13 mm LCD display
- Simple to use
- Simplifies circuit studies

#### • standard size



DIGITAL AMMETERS			WAS	NOW
PA-211	Ammeter	0-10A DC	\$45.15	\$42.89
PA-212	Ammeter	0-1.999A DC	\$45.15	\$42.89
PA-213	Millimeter	0-1.999mA DC	\$45.15	\$42.89
PA-214	Microammeter	0-1.999uA DC	\$45.15	\$42.89

DIGITAL VOLTMETERS			WAS	NOW
PA-202	Voltmeter	0-1.999A DC	\$45.00	\$42.89

### ERLENMEYER & VOLUMETRIC FLASKS - BOROSILICATE GLASS

7% off prices of Erlenmeyer & Volumetric Flask range.

Narrow neck Erlenmeyer (conical) flasks manufactured from heat resistant, low expansion 3.3 Borosilicate glass. Sold individually or in a pack.



ERLENMEYER FLASKS						
CODE	CAPACITY (ml)	NECK OD (mm)	OD X HT (mm)	QTY / PK	WAS	NOW
ARLW2064140-3	50	22	51 x 90	ea	\$3.60	\$3.35
ARLW2064140-3	50	22	51 x 90	10	\$34.00	\$31.60
ARLW2064140-4	100	28	64 x 105	ea	\$4.25	\$3.95
ARLW2064140-4	100	28	64 x 105	6	\$24.00	\$22.32
ARLW2064140-6	250	34	85 x 145	ea	\$5.25	\$4.88
ARLW2064140-6	250	34	85 x 145	6	\$30.00	\$27.90
ARLW2064140-7	500	34	105 x 180	ea	\$7.50	\$6.98
ARLW2064140-7	500	34	105 x 180	6	\$42.00	\$39.06

Class A Volumetric flask with polypropylene stopper.

VOLUMETRIC FLASKS					
CODE	CAPACITY (ml)	TOLERANCE (ml)	NECK SIZE	WAS	NOW
ARLW2064420-5	50	0.06	12/21	\$6.85	\$6.37
ARLW2064420-6	100	0.10	14/23	\$7.80	\$7.25
ARLW2064420-8	250	0.15	14/23	\$10.55	\$9.81
ARLW2064420-9	500	0.25	19/26	\$11.75	\$10.93
ARLW2064420-10	1000	0.40	24/29	\$20.40	\$18.97

# BIOLOGY

Priced to clear - while stocks last!

### PHOTOSYNTHESIS APPARATUS

For the measurement and collection of gas evolved by aquatic plants during photosynthesis. The gas evolved can be measured by the calibrated capillary tube and drawn off for analysis by the plastic syringes.

Mounted on a plastic panel - approximately 190 x 150mm.

BIO228

\$25



### 4D PLANT CELL MODEL

4D foam, build / take apart model kits.

The model is made of resilient, non-toxic EVA foam to withstand years of active investigation.

Includes a thorough, detailed teacher's guide with reproducible worksheets & complete background information.

EM99

\$20



### PLANT CELL MODEL - 4 PARTS ON BASE

Detailed 2D rendering of a greatly modified plant cell with cell structures and organelles. A chloroplast, mitochondrion and the nucleus can all be removed from the cell for further investigation.

Model dimensions: 11.5 x 10 x 2 inches.

Identification key card included.

BM0114

\$20



### STEM - DICOT - T.S.

Model shows various tissues vascular bundles in transverse section of a dicot stem of a sunflower. Raised Relief (on base). Overall length: 37cm

Eisco brand.

BM0012

\$20



### ROOT - DICOT PLANT MODEL

Raised Relief (on base);  
Numbered with Key Card- 37cm

BM0024

\$20



Prices include GST.

## MAGNETIC WHITEBOARD

### TANGRAMS - 7 PIECES

7 piece magnetic tangram set for use on magnetic board. Consists of 5 triangles, 1 square & 1 parallelogram. Can be combined with other coloured magnetic tangrams to illustrate different maths concepts. Approx. 14x14cm when complete.

Available in the following colours:  
red (Code: [WBMGTANGR](#))  
navy blue (Code: [WBMGTANGBLN](#))  
blue (Code: [WBMGTANGBL](#)).



\$2

### MAGNETIC COUNTING BUTTONS (PACK OF 25)

Helps demonstrate the principles of Pack of 25, all in the same colour, 20mm diameter magnetic counting buttons for use on magnetic white board. Distinct and visible metals. Activity guide included.

Available in the following colours (price per pack):  
red (Code: [WBEM07R](#))  
blue (Code: [WBEM07BL](#))  
green (Code: [WBEM07G](#)).

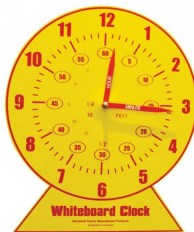


\$4.50

### MAGNETIC WHITEBOARD CLOCK

This clock has been specially designed for use on whiteboards or metal surfaces. This is an superb aid for teaching the reading of an analogue clock face to young students. The connections between the hour and minute hands are clearly shown, as well as the concept of 20 to six, half past one etc.

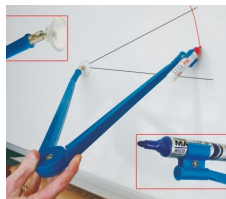
Screen-printed - magnetic plastic. 300mm x 350mm x 0.5mm sheet. Painted aluminium clock hands.



WBEM021  
\$10

### MAGNETIC WHITEBOARD COMPASS

The spring penholder which allows any size pen to be snapped in position. 18-22mm. Designed for whiteboard / dry erase markers. 40cm arms - 70cm radius. Suction cup on a ball swivel.



WBEM05  
\$15

### MAGNETIC WHITEBOARD ERGONOMIC ERASER

With replaceable pads. Includes 4 spare pads.



WBEM012  
\$9.25

### WHITEBOARD ERGONOMIC ERASER SPARE PADS

Pack of 10.

WBEM043  
\$9.25

## MATHS & MEASUREMENT

### VERSATILE FRACTION GEOBOARDS

Versatile fraction board. Has a square of 20 cm in each side. The back side can also be used for fractions. Teaches children the concept of point, line and surface and helps them learn about geometric figures. All figures formed on the pin board can be freely changed at any time.

- Both surfaces have pins arranged. Each pin has an expand round head.
  - A square and a circle are provided on the board.
  - The circle (10 cm in diameter) may be used with the fractions boards to teach children the concept of fraction and help children to check their counting - it divides into 2, 3, 4, 6, 8, 12 or 24 equal sectors.
- Made of soft material.



S-6525  
\$7.95

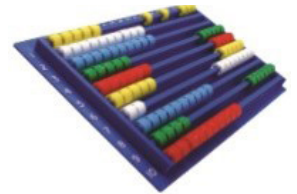
### SLIDE ABACUS

Invicta traditional slide abacus with beads in 5 colours; Horizontal and vertical number grids.

23 cm x 15 cm x 2 cm

IP-132059

\$17



### WATER TIMERS - SET OF 3

One of the oldest known methods of measuring time. Each lid is embossed with the approximate time that the pot takes to empty (30 sec, 1 min, 2 mins). Excellent for demonstrating that time can be measured by many means. 75mm x 90mm.



081459

\$15

### TRANSPARENT RELATIONAL GEO SOLIDS

Set of 14 hollow, size-related geometric solids. Designed for hands-on exploration of the relationships between shapes, surface area, and volume.

- Each geometric shape features a removable lid with stopper, so that shapes can be easily filled with sand or rice
- 8 page teacher's guide included
- Shapes included: cone, small cube, large cube, small cylinder, large cylinder, hemisphere, hexagonal prism, rectangular prism, square prism, small triangular prism, large triangular prism, square-based pyramid, triangular-based pyramid & sphere



LER0918

\$25

### "GIANT" GEO SOLIDS

Set of 10. 15cm high. Fill with sand or water. Explore shape & size and relationship between area and volume. Excellent for classroom demonstration. Visually dramatic.



LER3208

\$10

FOR MORE CLEARANCE ITEMS AND SPECIALS LOOK ON THE SALE ITEMS PAGE ON OUR WEBSITE

[www.scorpiontechnology.com.au](http://www.scorpiontechnology.com.au)

Prices include GST.